

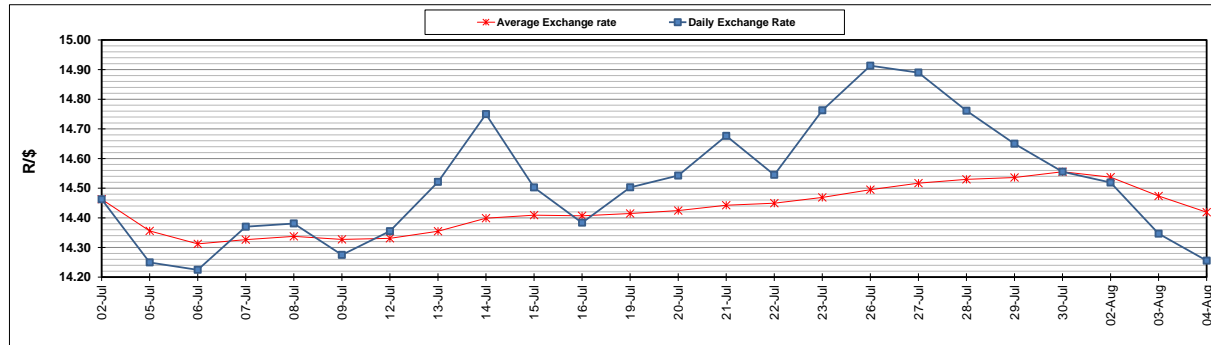
	PETROL 95 ULP	PETROL 93 ULP & LRP	DIESEL 0.05%	DIESEL 0.005%	ILL. PAR.
GAUTENG PUMP PRICE (SA c/l) AS FROM 04/08/2021	1,830.000	1,811.000	-	-	-
WHOLESALE PRICE (SA c/l) AS FROM 04/08/2021	-	-	1,564.200	1,566.600	963.488
SINGLE NATIONAL MAXIMUM RETAIL PRICE	-	-	-	-	1,217.000
BASIC FUEL PRICE - 04/08/2021 (SA c/l)	795.617	782.901	732.530	735.087	717.210
PRESS RELEASE CONTRIBUTION TO BFP 04/08/2021 - 04/08/2021 (SA c/l)	827.590	818.590	770.630	773.030	750.128
UNIT OVER/(UNDER) RECOVERY - 04/08/2021 (SA c/l)	31.973	35.689	38.100	37.943	32.918
AVERAGE BASIC FUEL PRICE 30/07/2021 - 04/08/2021	818.359	805.048	755.839	758.652	740.016
AVERAGE UNIT OVER/(UNDER) RECOVERY 30/07/2021 - 04/08/2021	(54.084)	(49.773)	(21.959)	(21.622)	(27.388)

ANALYSIS MOVEMENT OF AVERAGE OVER/(UNDER) RECOVERY

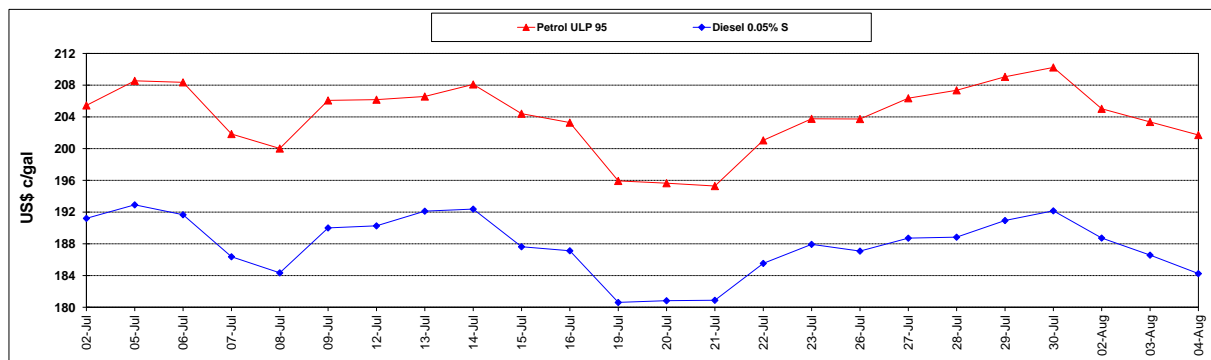
	PETROL 95	PETROL 93	DIESEL 0.05%	DIESEL 0.005%	ILL. PAR.
- MOVEMENT IN INTERNATIONAL PRODUCT PRICES	(60.713)	(56.294)	(28.082)	(27.767)	(33.382)
- MOVEMENT IN EXCHANGE RATE	6.629	6.521	6.123	6.145	5.994
AVERAGE UNIT OVER/(UNDER) RECOVERY 30/07/2021 - 04/08/2021	(54.084)	(49.773)	(21.959)	(21.622)	(27.388)

R/\$ EXCHANGE RATE - (R/\$14.2555- 04/08/2021)

EXCHANGE RATE USED IN BASIC FUEL PRICE



INTERNATIONAL PRODUCT PRICES OF BASKET USED IN BASIC FUEL PRICE



BASIC FUEL PRICE IN SA CENTS PER LITRE

